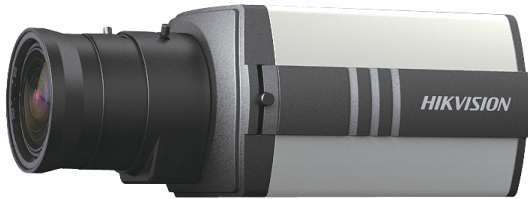
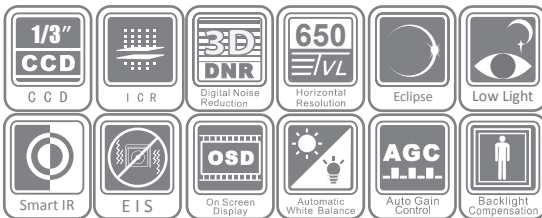


DS-2CC1193P(N)-A High Definition Box Camera



Specifications

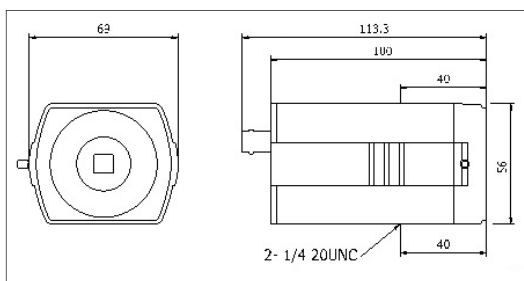
DS-2CC1193P(N)-A	
Camera	
Image sensor	1/3" Sony EXVIEW HAD CCD II
Signal system	PAL / NTSC
Effective pixels	PAL: 976 (H) × 582 (V) NTSC: 976 (H) × 494 (V)
Min. illumination	Color: 0.01 lux@F1.2, AGC on, 0.0001 lux@F1.2, AGC on, sens-up × 512 B/W: 0.001 lux@F1.2, AGC on, 0.00001 lux@F1.2, AGC on, sens-up × 512
Shutter time	PAL: 1/50s ~ 1/100,000s NTSC: 1/60s ~ 1/100,000s
Lens mount	C/CS mount
Auto iris	DC/Video drive
Day & night	IR cut filter with auto switch
Horizontal resolution	Color: 650 TVL, B/W: 700 TVL
Synchronization	Internal / power synchronization
Video output	1Vp-p composite output (75Ω / BNC)
S/N ratio	More than 62dB
Menu	
Camera ID	On / off (16 letters, adjusted position)
Auto gain control	Low / middle / high / off
D/N mode	Auto1 / auto2 / day / night
White balance	Auto trace WB1 / auto trace WB2 / manual / auto control
Private mask	On / off, maximum 12 zones
Motion detection	Mode 1 / mode 2 / off
BLC	Area / value / off
RS-485	Address / protocol / baud rate
Anti-flicker	On / off
Language	English / Chinese
Video	SMART IR, digital WDR, excessive highlight compensation, digital noise reduction, sharpness, brightness, saturation, resolution, electronic image stabilization, digital zoom, mirror, defect pixel correction
Scene	Indoor standard , indoor backlight , outdoor, low illumination , IR standard , customize
General	
Operating conditions	-10°C ~ 60°C (14°F ~ 140°F) Humidity 90% or less (non-condensing)
Power supply	24 VAC ± 10%, 12 VDC ± 10%
Power consumption	5W max. (10W max. with IR cut filter on)
Dimensions	69 x 56 x 113.3 mm (2.72" x 2.20" x 4.46")
Weight	400g (0.88 lbs)



Key Features

- 1/3" Sony EXVIEW HAD CCD II
- Low illumination
- 3D digital noise reduction
- Digital wide dynamic range
- True day / night
- Smart IR
- OSD menu

Dimensions



Accessories



Available models

DS-2CC1193P-A, DS-2CC1193N-A