

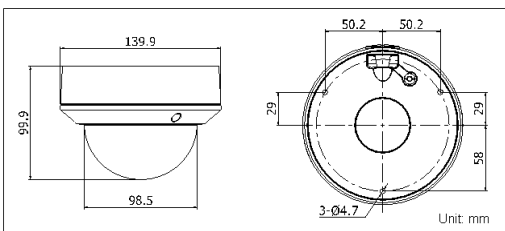
DS-2CD2712F-I(S) 1.3MP VF IR Dome Network Camera



Key features

- 1.3 megapixel (1280 x 960) resolution
- HD real-time video
- IR LEDs: up to 20m
- DWDR & 3D DNR & BLC
- Support on-board storage (up to 64GB)
- (-S) Audio I/O, Alarm I/O
- IP66
- Vandal-proof

Dimensions



DS-2CD2712F-I (S)	
Camera	
Image sensor	1/3" progressive scan CMOS
Min. illumination	0.01 lux@F1.2, AGC on 0.014 lux@F1.4, AGC on 0 lux with IR
Shutter time	1/25s (1/30s) ~ 1/100,000s
Lens	2.8 ~ 12mm @ F1.4, Angle of view: 80° ~ 27.2°
Angle adjustment	Pan: 0° ~ 355°, tilt: 0° ~ 75°, rotation: 0° ~ 355°
Lens mount	Φ14
Day & night	ICR
Digital noise reduction	3D DNR
Wide dynamic range	Digital WDR
Backlight compensation	Yes, zone configurable
Compression standard	
Video compression	H.264 / MJPEG
H.264 compression profile	Main profile
Video bit rate	32 Kbps ~ 16 Mbps
Audio compression (-S)	G.711 / G.726
Audio bit rate (-S)	64Kbps (G.711) / 16Kbps (G.726)
Image	
Max. image resolution	1280 x 960
Frame rate	50Hz: 25fps (1280 x 960), 25fps (1280 x 720), 25fps (704 x 576), 25fps (640 x 480) 60Hz: 30fps (1280 x 960), 30fps (1280 x 720), 30fps (704 x 576), 30fps (640 x 480)
Image settings	Saturation, brightness, contrast adjustable through client software or web browser
Network	
Network storage	NAS (iSCSI optional)
Alarm trigger	Motion detection, tampering alarm, network disconnect, IP address conflict, storage exception, storage error
Protocols	TCP/IP, ICMP, HTTP, HTTPS, FTP, DHCP, DNS, DDNS, RTP, RTSP, RTCP, PPPoE, NTP, UPnP, SMTP, SNMP, IGMP, 802.1X, QoS, IPv6, Bonjour (SIP optional)
System compatibility	ONVIF, PSIA, CGI
General functionalities	User authentication, dual stream, watermark
Interface	
Communication interface	1 RJ45 10M / 100M ethernet port
On-board storage	Built-in Micro SD/SDHC/SDXC card slot, up to 64 GB
General	
Operating conditions	-30 °C ~ 60 °C (-22 °F ~ 140 °F), humidity 95% or less (non-condensing)
Power supply	DC12V ± 10%, PoE (802.3af)
Power consumption	Max. 5.5W (max. 7W with ICR on)
Impact protection	IEC60068-2-75Eh, 50J; EN50102, up to IK10
Ingress protection level	IP66
IR range	Up to 20m
Dimensions	Φ 140 x 99.9 mm (Φ 5.51" x 3.94")
Weight	1000g

Available models

DS-2CD2712F-I, DS-2CD2712F-IS

* -S: 1-ch audio I/O interface and 1-ch alarm I/O interface.

* Product picture and technical specs subject to change without previous notice.
For further information, please contact our local sales representatives.

Accessories



DS-1273ZJ-135

Wall Mount
Metallic Bracket



DS-1273ZJ-135B

Wall Mount
Metallic Bracket
with junction box