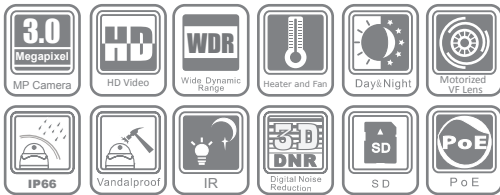


DS-2CD7254F(WD)-E(I)Z(H)

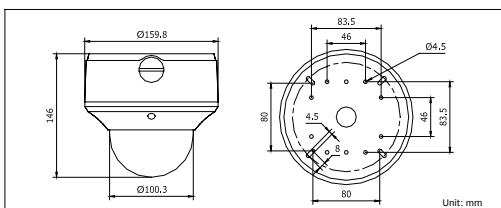
3 MP Outdoor Dome Network Camera



Key features

- 3.0 mega-pixel (2048 x 1536) with Full HD video
- 120dB wide dynamic range (option)
- Super low-light
- Motorized VF lens
- 3D digital noise reduction
- Vandal-proof housing
- IP66 rating
- IR LEDs optional (-I)
- Built-in heater & fan optional (-H)

Dimensions



	DS-2CD7254FWD-E(I)Z(H) * WDR	DS-2CD7254F-E(I)Z(H)
Camera		
Image sensor	1/3" progressive scan CMOS	1/2.5" progressive scan CMOS
Min. illumination	0.1 lux @F1.2, AGC on 0.17 lux @F1.6, AGC on 0 lux with IR	0.6 lux @F1.2, AGC on 1 lux @F1.6, AGC on -I: 0 lux with IR
Shutter time	1/25s ~ 1/100,000s	
Lens	2.7 ~ 9 mm @F1.6, Angle of view: 101° ~ 30.4°	
Lens mount	Φ14	
Auto iris	DC drive	
Angle Adjustment	Pan: 0 ~ 355°, Tilt: 0 ~ 80°, Rotation: 0 ~ 355°	
Day & Night	Electronic (-I: IR cut filter with auto switch)	
Wide dynamic range	120dB	n/a
Digital noise reduction	3D DNR	n/a
Compression Standard		
Video compression	H.264 / MPEG4 / MJPEG	
Bit rate	32 Kbps ~ 16 Mbps	
Dual stream	Yes	
Image		
Max. Image Resolution	2048 x 1536	
Frame rate	50Hz: 12.5fps (2048 x 1536), 25fps (1920 x 1080), 25fps (1600 x 1200) 60Hz: 15fps (2048 x 1536), 30fps (1920 x 1080), 30fps (1600 x 1200)	
Image settings	Saturation, Brightness, Contrast adjustable by client software or web browser	
Network		
Network storage	NAS (iSCSI optional)	
Alarm trigger	Motion detection, tampering alarm, network disconnect , IP address conflict, storage exception	
Protocols	TCP/IP, HTTP, DHCP, DNS, DDNS, RTP, RTSP, PPPoE, SMTP, NTP, SNMP, HTTPS, FTP, 802.1x, Qos (SIP, SRTP, IPv6 optional)	
Security	User authentication, watermark	
Interface		
Communication interface	1 RJ45 10 M / 100 M Ethernet interface	
Video output	1 Vp-p composite output (75 Ω/RCA)	
On-board storage	Built-in Micro SD slot, up to 32 GB	
Reset button	Yes	
General		
Operating conditions	-25 °C ~ 60 °C (-13 °F ~ 140 °F), Humidity 95% or less (non-condensing) -H: -40 °C ~ 60 °C (-40 °F ~ 140 °F) with heater and fan on	
Power supply	24 VAC ± 10%, PoE (802.3af) -H: 24 VAC ± 10%, High PoE (802.3at)	
Power consumption	max. 9W -I: max. 12W -H: max. 24W with heater & fan on	
Impact protection	IEC60068-2-75Eh, 50J; EN50102, up to IK10	
Weather proof rating	IP66	
IR range	approx. 20 ~ 30m	
Dimensions	Φ159.8 x 146 mm (Φ6.29" x 5.75")	
Weight	2100 g (4.62 lbs)	

Available models

DS-2CD7254FWD-EZ, DS-2CD7254FWD-EIZ, DS-2CD7254FWD-EZH, DS-2CD7254FWD-EIZH
DS-2CD7254F-EZ, DS-2CD7254F-EIZ, DS-2CD7254F-EZH, DS-2CD7254F-EIZH

* -H: built-in heater and fan

* -I: IR LEDs, up to 30m

* -Z: motorized VF lens

* Product picture and technical specs subject to change without previous notice.
For product availability, please contact our local sales representatives.