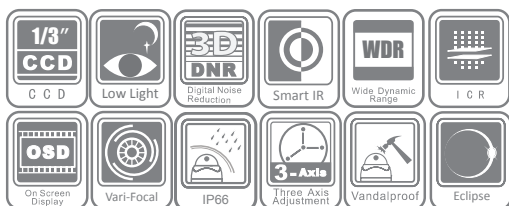


DS-2CC51A1/51A5/51A7P(N)-VPIR(H)

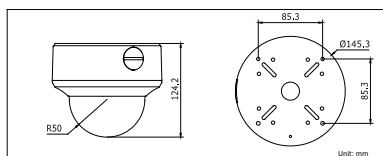
700 TVL Outdoor Vandal Proof IR Dome



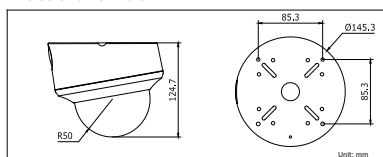
Key features

- 1/3" SONY CCD
- 700 TVL Horizontal Resolution
- Super Low Illumination
- 2.8–12mm Vari-focal Lens
- True Day/Night
- 75 dB Wide Dynamic Range (DS-2CC51A7P(N)-VPIR)
- OSD Menu, DNR, Smart IR, Eclipse
- Vandal Proof, IP66 Rating

Dimensions



Dimensions with DS-1240ZJ:



Accessories



DS-1216ZJ
(Wall Mount)

DS-1240ZJ
(Tilted wall-mount)

DS-1238ZJ
(Pendant Mount)

DS-1241ZJ
(In-ceiling Mount)

	DS-2CC51A1P(N)-VPIR(H)	DS-2CC51A5P(N)-VPIR(H)	DS-2CC51A7P(N)-VPIR(H)
Camera			
Image Sensor	1/3" SONY CCD		
Signal System	PAL/NTSC		
Effective Pixels	PAL: 976 (H) × 582 (V), NTSC: 976 (H) × 494 (V)		
Min. Illumination	0.001 Lux @ (F1.2, AGC ON), 0 Lux with IR 0.0014 Lux @ (F1.4, AGC ON), 0 Lux with IR	0.001 Lux @ (F1.2, AGC ON), 0.0001 Lux @ (F1.2, AGC ON, sensitivity × 256), 0 Lux with IR 0.0014 Lux @ (F1.4, AGC ON), 0.00014 Lux @ (F1.4, AGC ON, sensitivity × 256), 0 Lux with IR	0.001 Lux @ (F1.2, AGC ON), 0.0001 Lux @ (F1.2, AGC ON, sensitivity × 256), 0 Lux with IR 0.0014 Lux @ (F1.4, AGC ON), 0.00014 Lux @ (F1.4, AGC ON, sensitivity × 256), 0 Lux with IR
Shutter speed	PAL: 1/50 s to 1/100,000 s, NTSC: 1/60 s to 1/100,000 s		
Lens	2.8 - 12 mm @ F1.4		
Angle of view	80° - 27.2°		
Lens Mount	φ14		
Auto Iris	DC drive		
Angle Adjustment	Pan: 0 - 355°, Tilt: 0 - 80°, Rotation: ± 90°		
Day & Night	IR cut filter with auto switch		
Horizontal Resolution	700 TVL		
Synchronization	Internal/Power synchronization		
Video Output	1Vp-p composite output (75 Ω/BNC); Test monitor out [1Vp-p composite output (75 Ω/BNC), device line]		
S/N Ratio	More than 62 dB		
Menu			
Camera ID	On/Off (52 letters, position adjustable)	On/Off (16 letters, position adjustable)	On/Off (16 letters, position adjustable)
Auto Gain	—	Low/Middle/High/Off	Low/Middle/High/Off
D/N Mode	Auto /Day/Night/EXT1/EXT2	Auto/Day/Night	Auto/Day/Night
White Balance	ATW/PUSH/USER1/USER2/ ANTI CR/MANUAL/PUSH LOCK	Auto trace WB1/Auto trace WB2/Manual/Auto Control	Auto trace WB1/Auto trace WB2/Manual/Auto Control
Privacy Masking	On/Off, maximum 8 zones	On/Off, maximum 12 zones	On/Off, maximum 12 zones
Motion Detection	On/Off		
BLC	Area/Intensity/Off		
WDR	—	—	Value/Contrast/Return
Anti-flicker	—	—	On/Off
Language	Chinese/ English/ Japanese/ German/ French/ Russian/ Portuguese/ Spanish	English/Chinese	English/Chinese
Video	SMART IR, ATR, HLC, DNR, Sharpness, Brightness, Contrast, Hue, Gain, Mirror, Defect Pixel Correction	SMART IR, Digital Wide Dynamic Range, Eclipse, Digital Noise Reduction, Sharpness, Brightness, Saturation, Resolution, Electronic image stabilization, Digital Zoom, Mirror, Defect Pixel Correction	SMART IR, Eclipse, Digital Noise Reduction, Sharpness, Brightness, Saturation, Resolution, Electronic image stabilization, Digital Zoom, Mirror, Defect Pixel Correction
Scene	—	Indoor Standard , Indoor Backlight , Outdoor, Low illumination , IR Standard , Customize	Indoor Standard , Indoor Backlight , Outdoor, Low illumination , Customize, IR Standard
General			
Working Temperature/Humidity	-10 °C - 60 °C (14 °F - 140 °F) Humidity 90% or less (non-condensing) -H: -40 °C - 60 °C (-40 °F - 140 °F) with heater and fan on		
Power Supply	24 V AC ± 10%, 12 V DC ± 10% -H: 24 V AC ± 10%		
Ingress Protection	IP66		
Heater	-H: support		
IR Range	-IR: approx 20 to 30 meters		
Power Consumption	Max. 13 W -H: Max. 25W		
Impact Protection	IEC60068-2-75 test, Eh, 50J; EN50102, up to IK10.		
Dimensions	Φ 145.3 × 124.2 mm (Φ 5.72" × 4.89")		
Weight	2000 g (4.40 lbs)		

Available models

PAL: DS-2CC51A1P-VPIR, DS-2CC51A5P-VPIR, DS-2CC51A7P-VPIR, DS-2CC51A1P-VPIRH, DS-2CC51A5P-VPIRH, DS-2CC51A7P-VPIRH
NTSC: DS-2CC51A1N-VPIR, DS-2CC51A5N-VPIR, DS-2CC51A7N-VPIR, DS-2CC51A1N-VPIRH, DS-2CC51A5N-VPIRH, DS-2CC51A7N-VPIRH