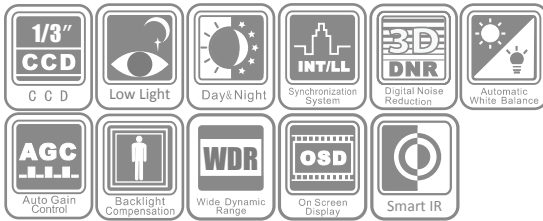


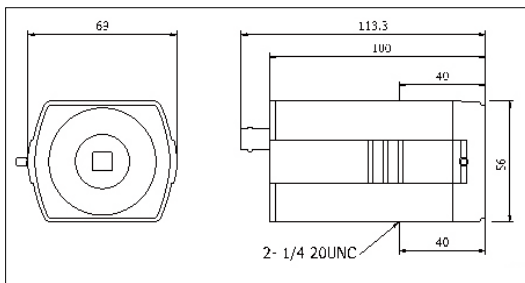
## DS-2CC1193/1195/1197P(N)-A(-C) 650TVL Box Camera



### Key features

- 1/3" Sony CCD
- Low illumination
- 650TVL high resolution
- 3D digital noise reduction
- True Day/night
- OSD menu

### Dimensions



### Accessories



### Specifications

	DS-2CC1193P(N)-A(-C)	DS-2CC1195P(N)-A(-C)	DS-2CC1197P(N)-A(-C)
<b>Camera</b>			
Image sensor	1 / 3" SONY EXView HAD CCD II	1 / 3" SONY EXView HAD CCD II	1 / 3" SONY Super HAD CCD II
Signal system	PAL / NTSC		
Effective pixels	PAL: 976 (H) × 582 (V), NTSC: 976 (H) × 494 (V)		
Min. illumination	Color: 0.01 Lux @F1.2, AGC ON, 0.0001 Lux @F1.2, AGC ON, sensitivity × 512 B / W: 0.001 Lux @F1.2, AGC ON, 0.00001 Lux @F1.2, AGC ON, sensitivity × 512	Color: 0.001 Lux @F1.2, AGC ON, 0.0001 Lux @F1.2, AGC ON, sensitivity × 512 B / W: 0.0001 Lux @F1.2, AGC ON, 0.00001 Lux @F1.2, AGC ON, sensitivity × 512	Color: 0.001 Lux @F1.2, AGC ON, 0.00001 Lux @F1.2, AGC ON, sensitivity × 512 B / W: 0.0001 Lux @F1.2, AGC ON, 0.00001 Lux @F1.2, AGC ON, sensitivity × 512
Shutter time	PAL: 1 / 50 s to 1 / 100,000 s NTSC: 1 / 60 s to 1 / 100,000 s		
Lens mount	C / CS mount		
Auto iris	DC / Video drive		
Day & night	IR cut filter with auto switch		
Horizontal resolution	650 TVL (Color), 700 TVL (B / W)		
Synchronization	Internal / Power synchronization		
Video output	1Vp-p composite output (75 Ω / BNC)		
S / N ratio	More than 62 dB		
<b>Menu</b>			
Camera ID	On / Off (16 letters, position adjustable)		
Auto Gain	Low / Middle / High / Off		
D / N Mode	Auto1 / Auto2 / Day / Night		
White Balance	Auto trace WB1 / Auto trace WB2 / Manual / Auto Control		
Private Mask	On / Off, maximum 12 zones		
Motion Detection	Mode 1 / Mode 2 / Off		
BLC	Area / Value / Off		
WDR	Digital	Digital	75 dB
RS-485	Address / Protocol / Baud Rate		
Anti-Flicker	On / Off		
Language	English / Chinese		
Function	SMART IR, Digital Wide Dynamic Range, Eclipse, Digital Noise Reduction, Sharpness, Brightness, Saturation, Resolution, Electronic image stabilization, Digital Zoom, Mirror, Defect Pixel Correction		Digital Noise Reduction, Sharpness, Brightness, Saturation, Resolution, Electronic image stabilization, Digital Zoom, Mirror, Defect Pixel Correction
Scene	Indoor Standard , Indoor Backlight , Outdoor, Low illumination , IR Standard , Customize		Indoor Standard , Indoor Backlight , Outdoor, Low illumination , Customize
<b>General</b>			
Operating conditions	-10°C ~ 60°C (14°F ~ 140°F) Humidity 90% or less (non-condensing)		
Power supply	24 V AC ± 10%, 12 V DC ± 10% (-C series support 100 - 240 V AC)		
Power consumption	Max. 5 W (Max. 10 W with IR cut filter on)		
Dimensions	69 × 56 × 113.3 mm (2.72" × 2.20" × 4.46")		
Weight	400g (0.88 lbs)		

### Available models

DS-2CC1193P-A, DS-2CC1193N-A, DS-2CC1195P-A, DS-2CC1195N-A, DS-2CC1197P-A, DS-2CC1197N-A  
DS-2CC1193P-C, DS-2CC1193N-C, DS-2CC1195P-C, DS-2CC1195N-C, DS-2CC1197P-C, DS-2CC1197N-C